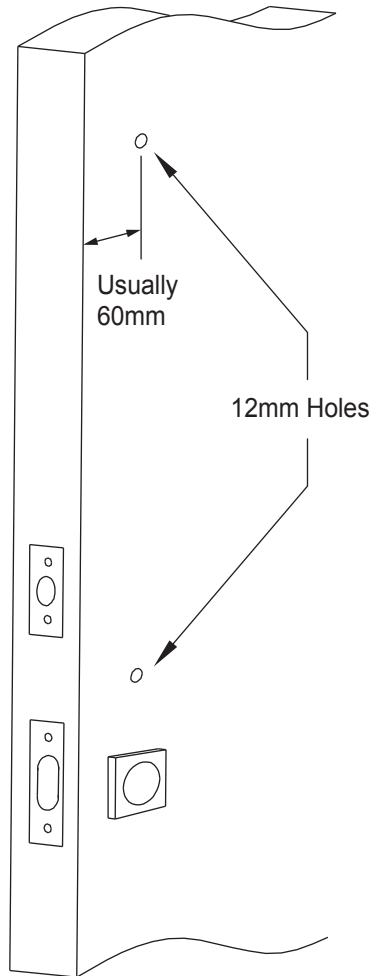


Pull Handle Installation Instructions

Step 1.

- Locate the required position of the pull handle ensuring it avoids interfering with all other hardware.
- Mark two hole centrelines at the required spacing for the model being installed (Vertically - 300mm, 450mm, 600mm). The usual distance across from the door edge is 60mm.
- Transfer the two hole centrelines onto the opposite face of the door. (or use a small pilot drill to drill through to the opposite face).
- Keep the drill straight and level when drilling the holes.
- Drill two 12mm holes on one face of the door and ensure the drill does not break through to the opposite face (breaking through can cause large splintering of the door).
- Drill through to the two holes from the opposite face of the door.



Gainsborough
ENTER WITH STYLE™

Gainsborough Hardware Industries Limited,
Melbourne, Australia. A.B.N. 25 004 792 269
www.gainsboroughhardware.com.au

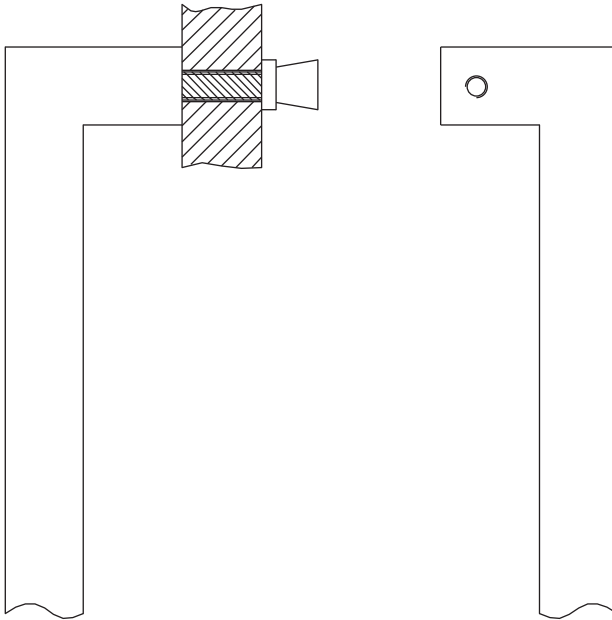
RES1DOC06AM1
AUG '17



Pull Handle Installation Instructions

Step 2.

- Select the correct length screws to suit the door thickness.
- Fix the exterior pull handle with plastic packers onto the door with the two screws.
- Install the interior pull handle over the heads of the two screws and fix in place by installing and tightening the grub screws evenly.



Gainsborough
ENTER WITH STYLE™

Gainsborough Hardware Industries Limited,
Melbourne, Australia. A.B.N. 25 004 792 269
www.gainsboroughhardware.com.au

RES1DOC06AM1
AUG '17

