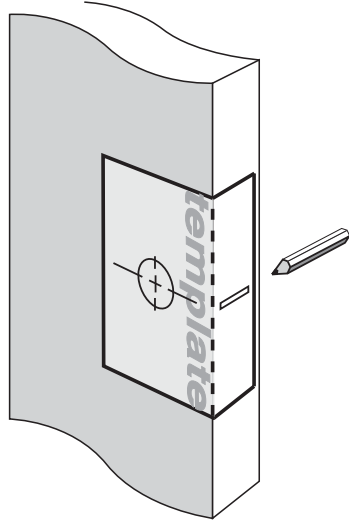


Installation instructions for Sliding Cavity Door Lock

386 Square Passage Set and 396 Circular Passage Set (Refer to drawing on reverse)

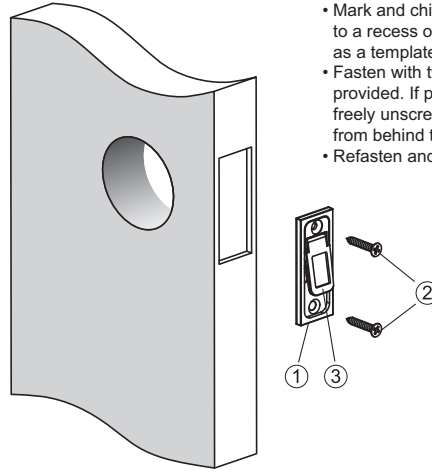
Step 1. Door Preparation

- Fold template where indicated.
- Position template on door edge at desired latch height.
- Firmly hold template and mark pull tab plate height and escutcheon hole centre at required backset. (refer template).
- Measure door thickness and mark centre.
- At required backset drill pilot hole – suggested size 3mm (1/8").
- Enlarge hole to 54mm (2 1/8") as required, drilling from both sides of the door.

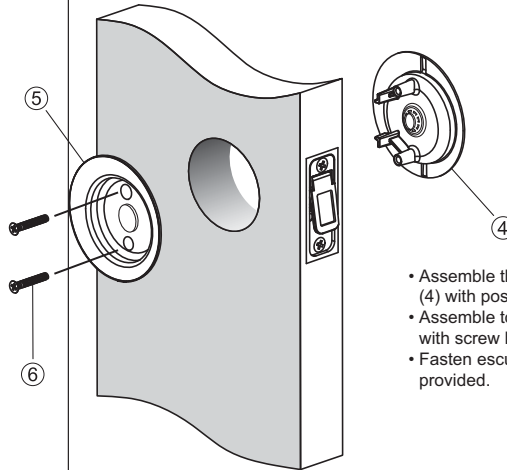


Step 2. Pull Tab Plate Installation

- Mark and chisel latch faceplate (1) to a recess of 4mm. Use faceplate as a template.
- Fasten with two screws (2) provided. If pull tab (3) doesn't move freely unscrew plate and clear wood from behind the pull tab hinge.
- Refasten and check pull tab is free.



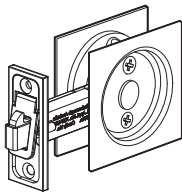
Step 3. Final Assembly



- Assemble the external escutcheon (4) with posts for screws to the door.
- Assemble to internal escutcheon with screw holes to the door (5).
- Fasten escutcheons with screws (6) provided.

NOTE: Carefully follow these instructions when installing. Do not overtighten screws. Use of power drill is not recommended.

Note: Installation instructions also apply to 386 Square Sliding Cavity Door Passage Set



FOLD HERE

Mark centre-line of latch hole

Mark centre-line of latch hole

Installation template for Sliding Cavity Door Lock

Fit here on door edge

54mm (2 1/8") hole

BACKSET 60mm (2 3/8")

Fit here on door edge

installation template for sliding cavity door passage set

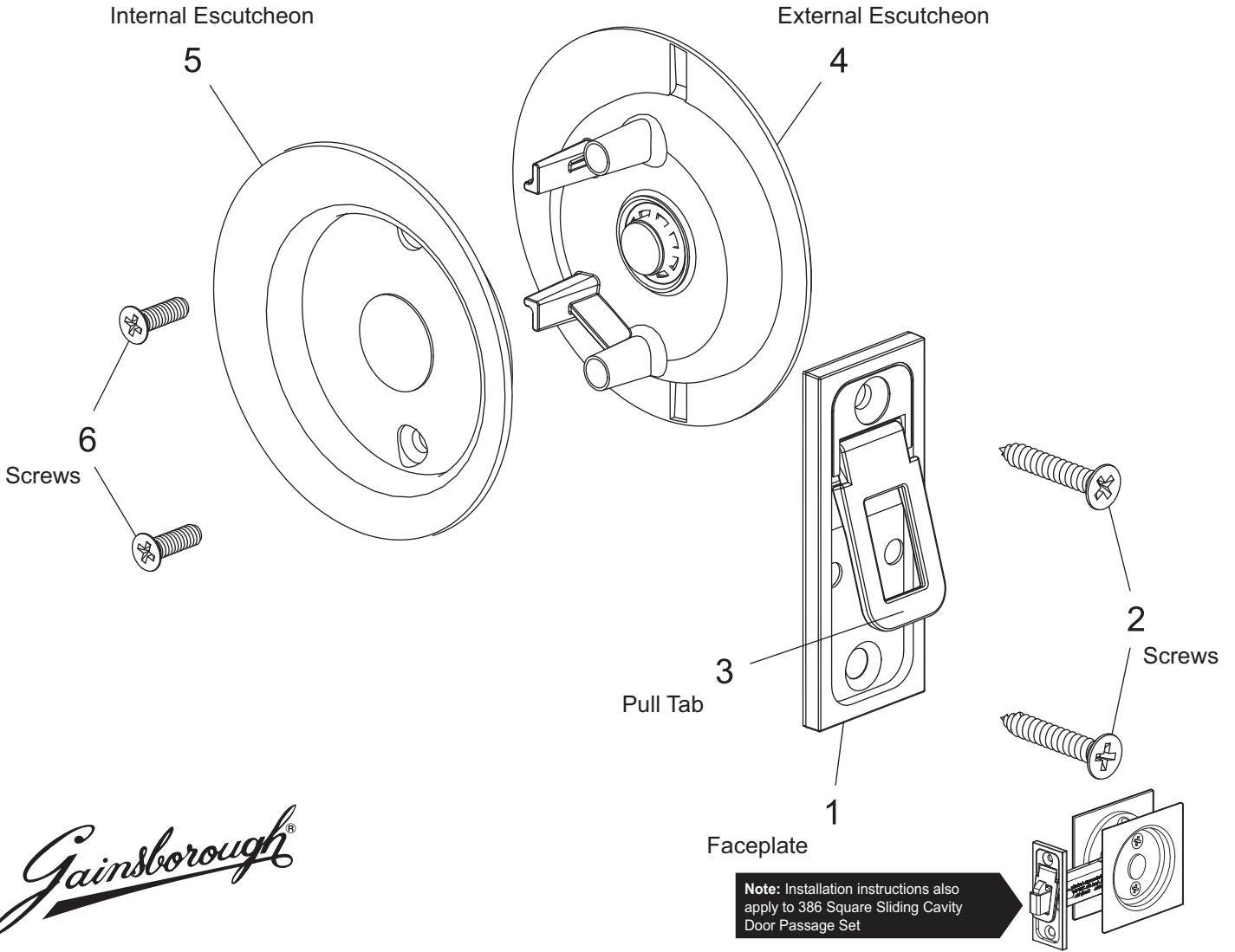
Gainsborough[®]

Gainsborough Hardware Industries Limited,
Melbourne, Australia. A.B.N. 25 004 792 269
www.gainsboroughhardware.com.au

PAIT ???

Installation instructions for Sliding Cavity Door Lock

386 Square Passage Set and 396 Circular Passage Set



Note: Installation instructions also apply to 386 Square Sliding Cavity Door Passage Set