
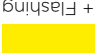

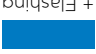


- 1 First, delete the device from the app prior to performing the reset. Go to Settings > Wi-Fi Bridge settings > [Choose your home or property] Delete the Wi-Fi Bridge. Hold the centre button on the Wi-Fi bridge for 10 seconds.
- 2 Hold the centre button on the Wi-Fi bridge for 10 seconds.
- 3 Reset is complete when the light turns blue.

HOW TO RESET:

CONNECTED	
NOT CONNECTED	+ Flashing 
ERROR	
INITIALISING/SETTING UP	+ Flashing 

Getting to know the lights

GAINSBOROUGH
freestyle

ELECTRICAL SAFETY INFORMATION

MODEL No.: GFS001WHV
FIRMWARE VERS.: 1.0

ALLEGION 

ALLEGION (AUSTRALIA) PTY LTD
PHONE 1800 098 094
gainsboroughhardware.com.au

ALLEGION (NEW ZEALAND) LIMITED
PHONE 0800 477 869
gainsboroughhardware.co.nz

31-33 ALFRED STREET,
BLACKBURN, 3130 VIC AUSTRALIA

MADE IN CHINA



Input: 100-240V /
50/60Hz / 70mA



Please recycle
this packaging

GAINSBOROUGH
freestyle



**WI-FI BRIDGE
AND DOOR SENSOR KIT**

USER GUIDE

- Step 1: Follow the door sensor installation instructions on this leaflet.
 - Step 2: Plug in the Wi-Fi Bridge.
 - Step 3: On the Freestyle app, go to: Settings > Add New Device > [Choose your home or property] The app will guide you through the setup process.
- LET'S SEE IF IT WORKS.**
- Ensure your mobile Bluetooth is disabled. With the door open, try to unlock and lock via your app. If this works, you have completed the set up!
- Enjoy your connected Gainsborough Freestyle lock.
- If this did not work, retry the set up.

Set up & Installation

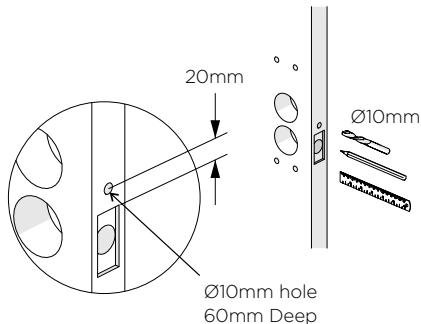
Door Sensor Installation

IMPORTANT: Remove Internal and External lockset escutcheons from the door prior to installation. Latch can remain in the door.

Step 1:

PREPARE DOOR

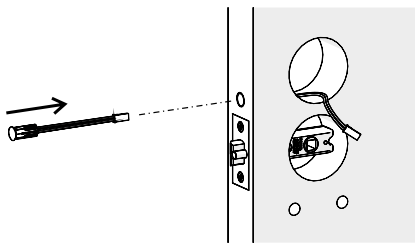
Drill a $\varnothing 10\text{mm}$ hole to a depth of 60mm in the side of the door as shown.



Step 2:

INSTALL DOOR SENSOR IN DOOR

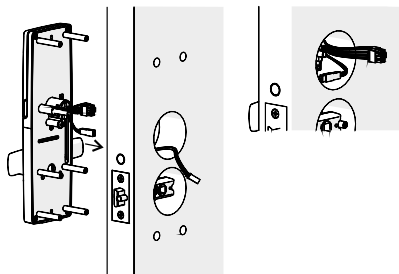
- 1 Insert Door Sensor cable through the $\varnothing 10\text{mm}$ hole.
- 2 Extend it through the $\varnothing 54\text{mm}$ hole.
- 3 Firmly press the magnet housing into the door edge until the front face is flush with the door edge.



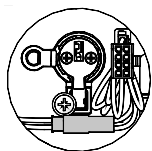
Step 3:

CONNECT DOOR SENSOR

- 1 Connect Door Sensor cable to plug on the Main cable.



- 2 Ensure the cables are tucked in the $\varnothing 54\text{mm}$ hole alongside the cylinder, and are not in a position to be pinched during assembly of the Internal Furniture.



Step 4:

INSTALL DOOR POSITION MAGNET

- 1 Establish position of magnet such that it aligns with Sensor in door.
- 2 Drill a $\varnothing 10\text{mm}$ hole for the Door Position Magnet and fit magnet as shown.

