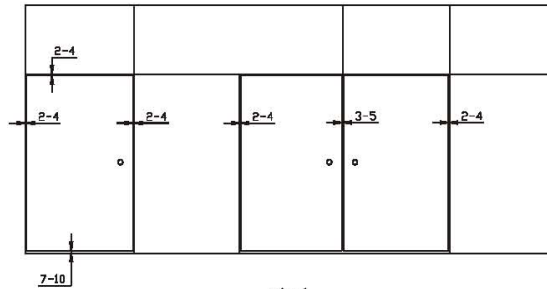


## Installation Illustration For ECO GF Series Patch Fitting

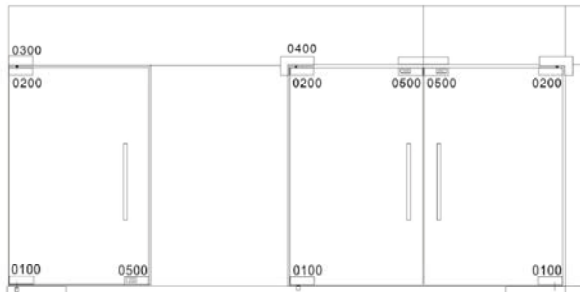
A 、 Space between door and panel as pic.1:



pic.1

B 、 Installation illustration as pic.2:

GF series Patch Fittings: GF-0100. GF-0200. GF-0300. GF-0400;  
GF series Lock: GF-0500;



pic.2

C 、 Note:

For GF-0100. GF-0200. GF-0300. GF-0400

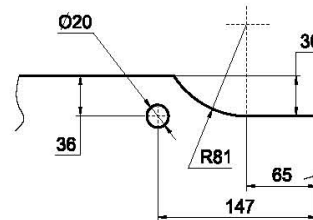
- 1) Max loading: 80kg.
- 2) Max width of door: 1100mm.
- 3) Materials: Cover: SUS304; Body: Alumimum.
- 4) Fit for 8mm(5/16") ~ 12mm(1/2") tempered flat glass.
- 5) Plus total 4mm gaskets for 12mm glass;  
Plus total 6mm gaskets for 10mm glass;  
Plus total 8mm gaskets for 8mm glass.
- 6) Bolt M6: 15Nm (5mm hexagonal wrench).
- 7) Open-close can be more than 400,000 times.

For GF-0500

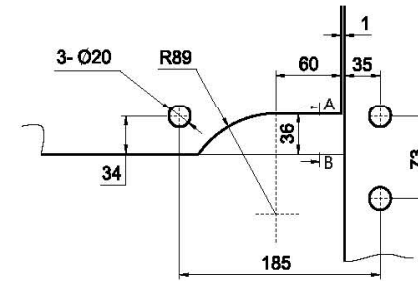
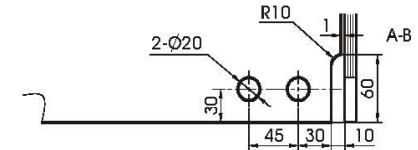
- 1) Materials: Cover: SUS304; Body: Alumimum.
- 2) Fit for 8mm(5/16") ~ 12mm(1/2") tempered flat glass.
- 3) Plus total 2mm gaskets for 12mm glass;  
Plus total 4mm gaskets for 10mm glass;  
Plus total 6mm gaskets for 8mm glass.

D 、 Glass installation location as pic.3:

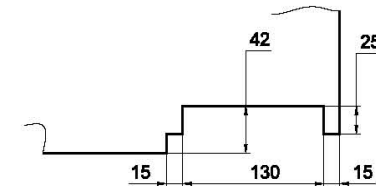
1) The glass cut-out of GF-0100 / GF-0200 / GF-0300



2) The glass cut-out of GF-0400



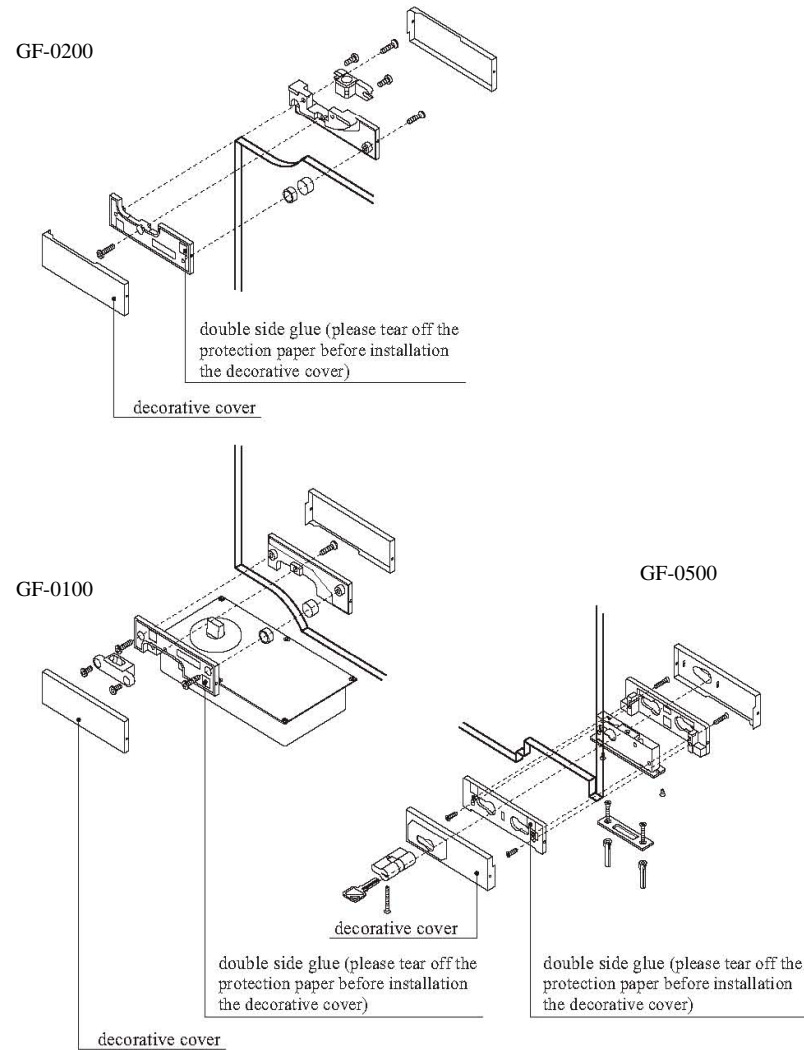
3) The glass cut-out of GF-0500



## Installation Illustration For ECO GF Series Patch Fitting

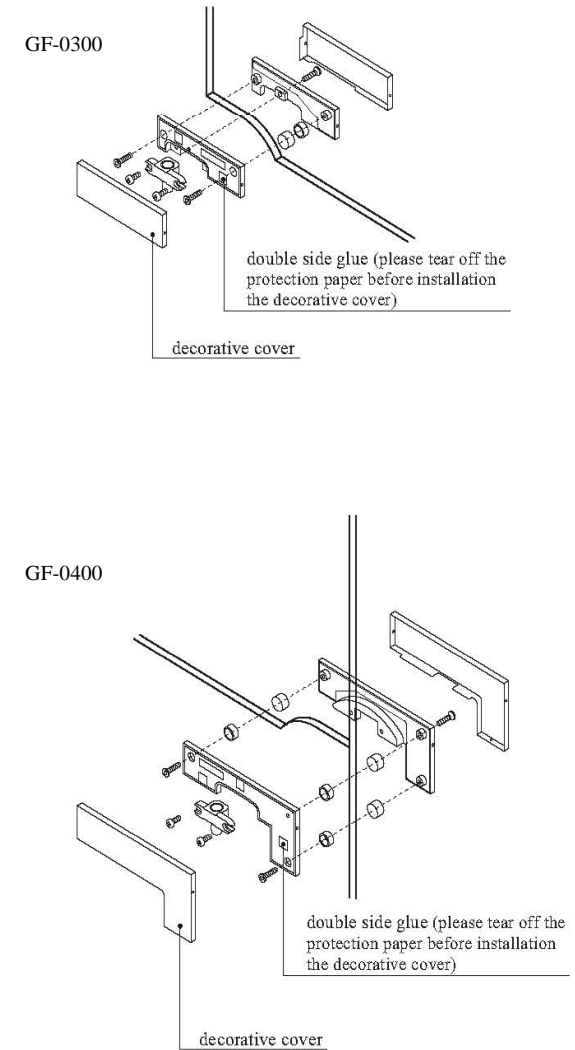
### E 、 Installation manner

1) The installation for GF-0100. GF-0200. GF-0500 as pic.4:



pic.4

2) The installation for GF-0300. GF-0400 as pic.5:



pic.5