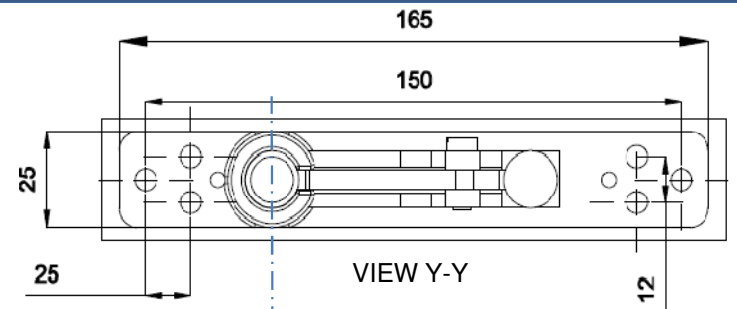


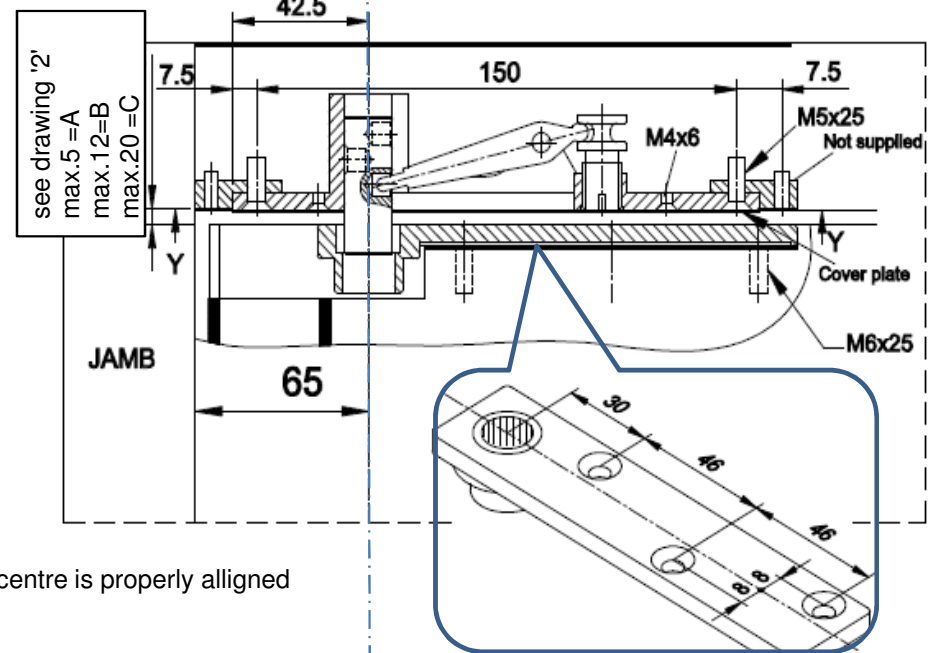
# FH 840 Floor Spring Accessories Installation Instructions

## 1. Preparation work

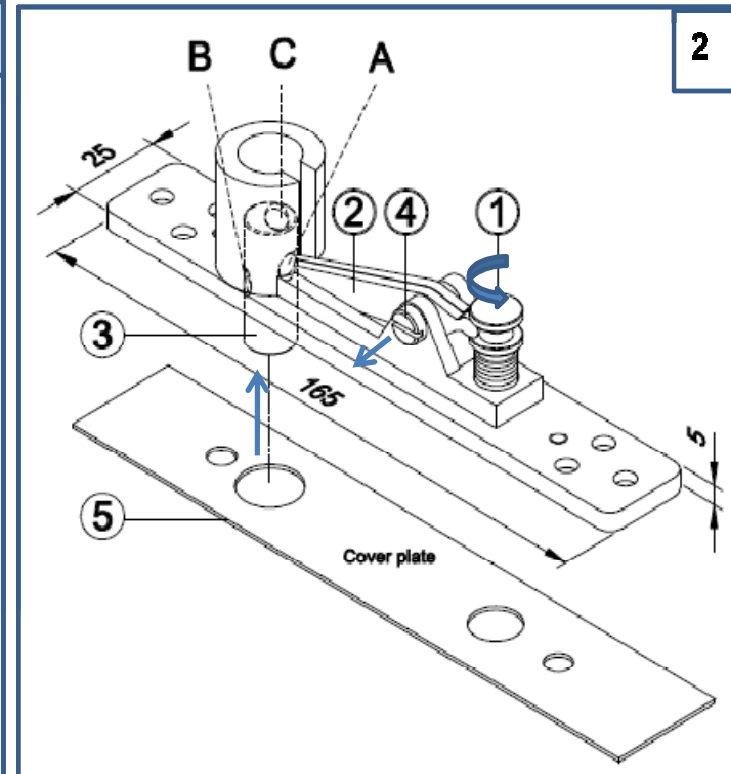
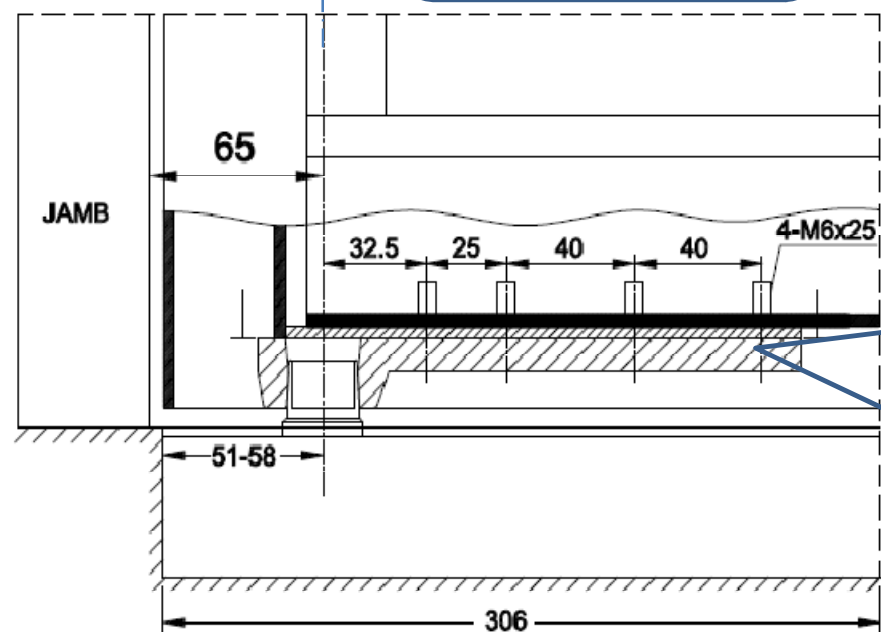
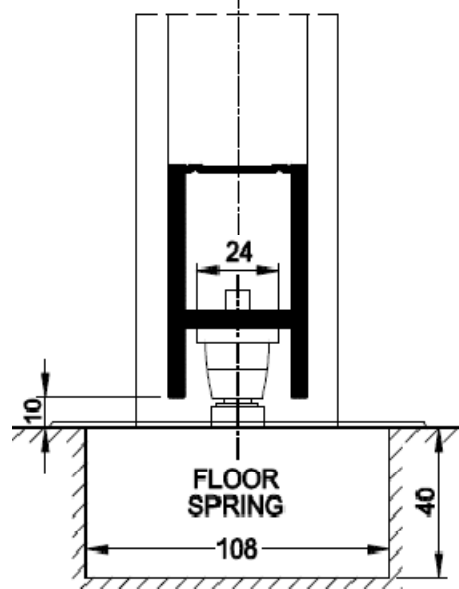
Mill or route door and frame to accept relevant centre parts.



1



Ensure that top centre is properly aligned with floor spring



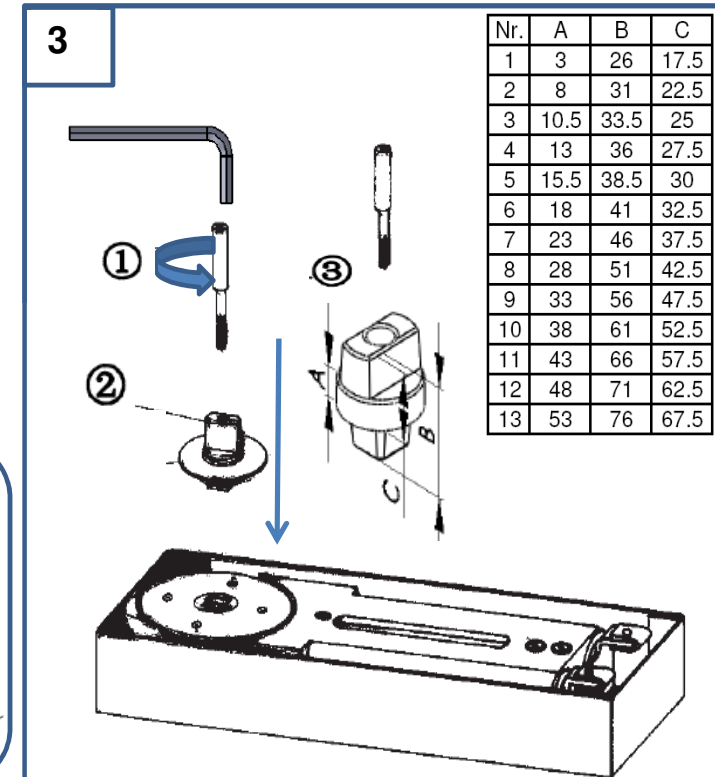
2

## 2. Top Centre - frame portion

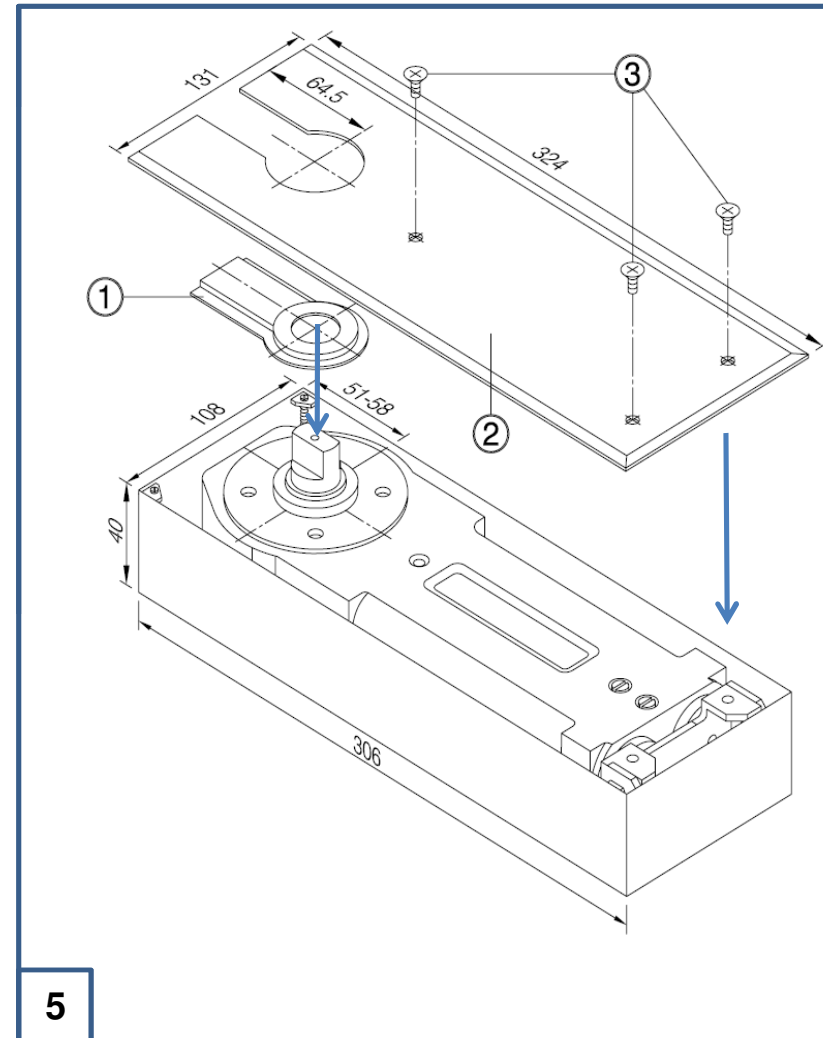
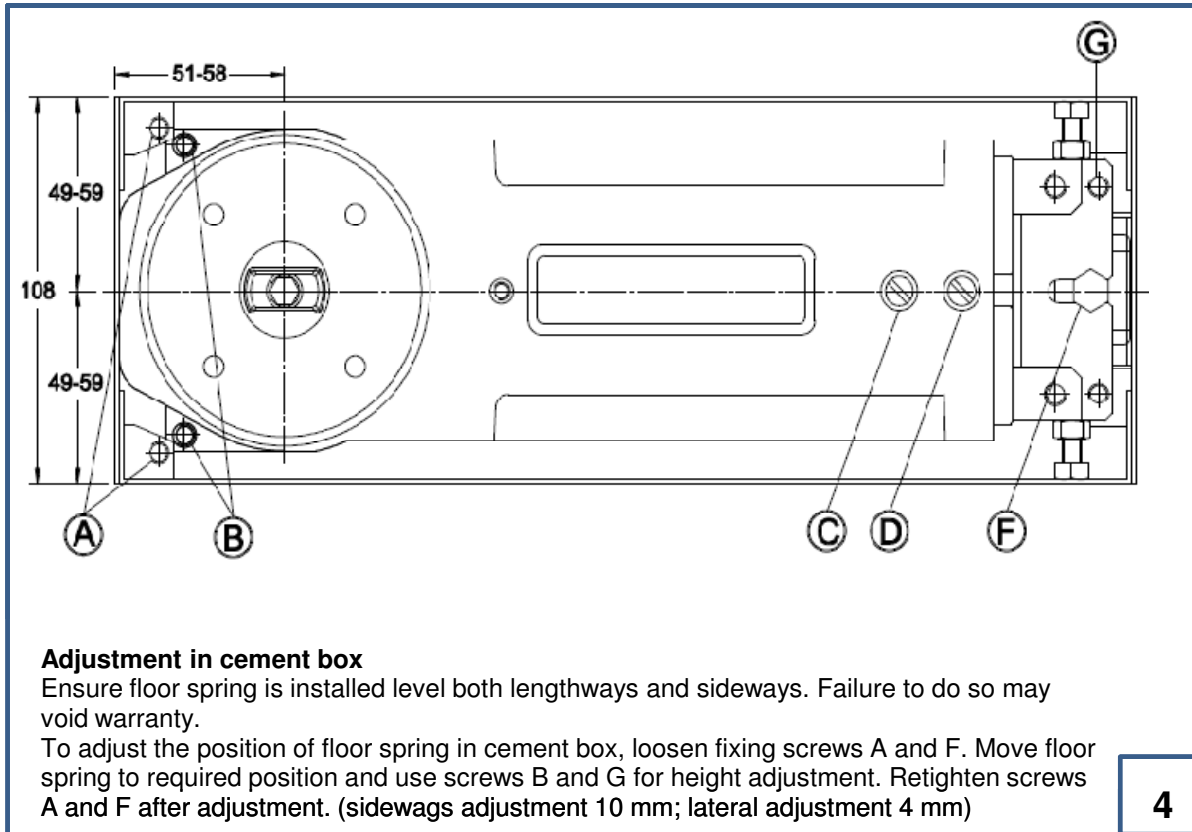
To change the extended "throw" of the pivot pin 3 proceed as follows:  
 Unscrew shoulder screw 4, turn adjustment screw 1 counter clockwise until pivot pin 3 and rocker arm 2 can be removed. Reassemble in pivot pin 3. Maximum "throw" is achieved with rocker arm 2 in position C

## 3. Locate Floor Spring

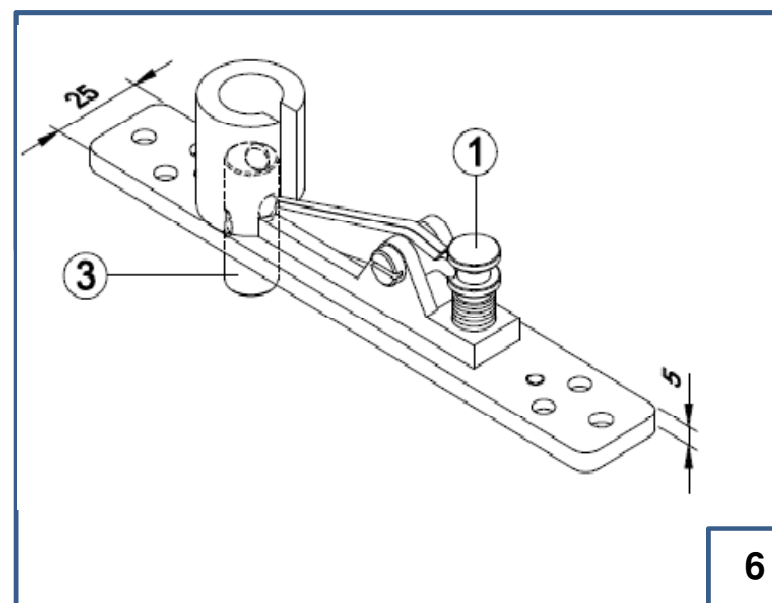
Prepare recess in floor for cement case as per dimensions shown (1. Preparation work)  
 Should extended spindle be required, remove screw 1 with 5mm allen key and fit suitable extended spindle (supplied separately, available in 5mm increments from 5mm to 50mm)



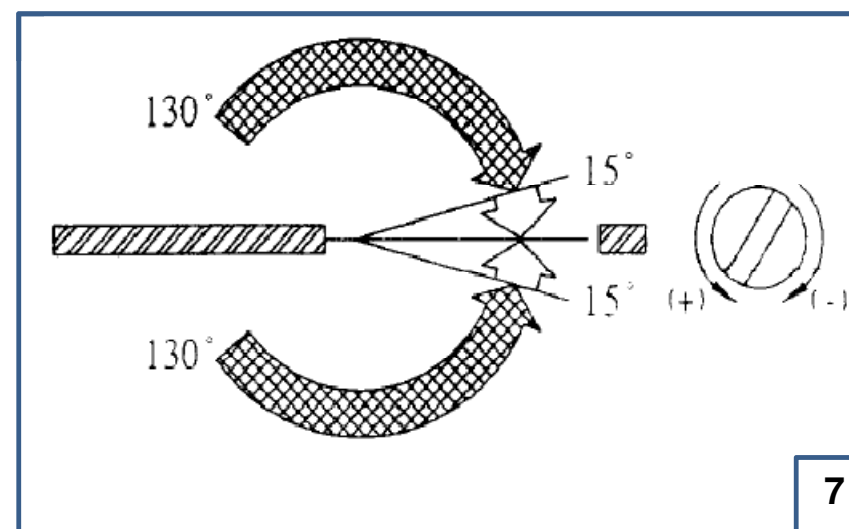
3



**5. Attachment of cover plate**  
press insert piece 1 into gap behind spindle and secure cover plate 2 to floor spring with fixing screw 3



**6. Installation of door:**  
open door fully to reveal adjustment screw 1 of pivot pin 3;  
Turn screw counter clockwise until pin fully engages with pivot in door



**7. Adjustment of closing speed**  
Two regulating valves C and D  
Valve C: controlled closing range 130° ~ 15°  
Valve D: controlled closing range 15° ~ 0°