

# Installation Instructions for 9000 Series Handle Sets

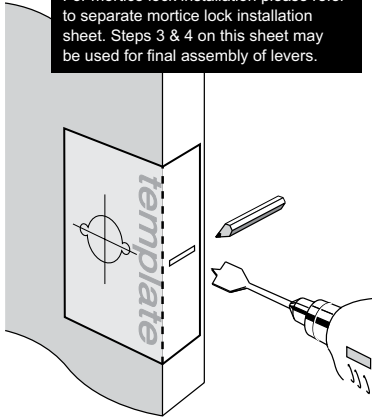
for passage applications for new doors (35mm diameter centre hole through door face).

## Step 1.

- Fold template where indicated.
  - Position template on door edge at desired latch height.
  - Firmly hold template and mark latch height on door edge and centre points of handle fixing holes on door face at required backset (refer template).
  - Measure door thickness and mark centre.
  - Drill 25mm (1") latch hole through door edge.
- Note:** it is important to drill this hole squarely.
- Drill two 10mm (3/8") holes and one 35mm (1 3/8") hole through door face at required backset.
- Ensure 10mm holes are drilled first.**

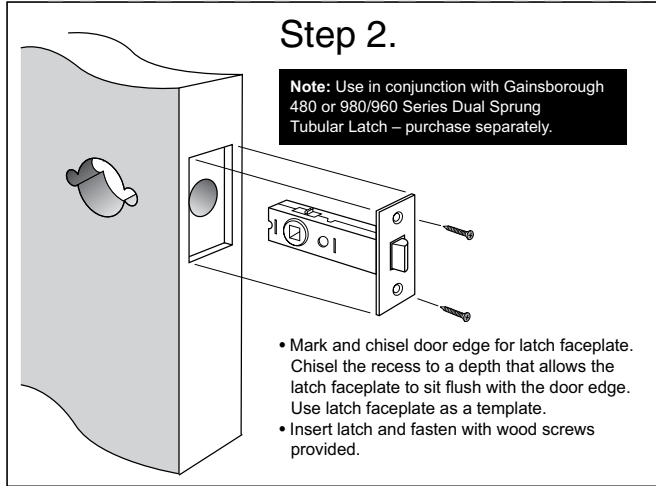
### Important Note

For mortice lock installation please refer to separate mortice lock installation sheet. Steps 3 & 4 on this sheet may be used for final assembly of levers.



## Step 2.

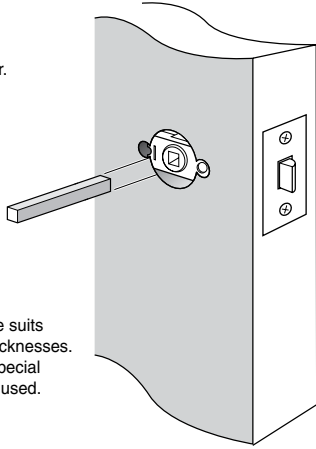
**Note:** Use in conjunction with Gainsborough 480 or 980/960 Series Dual Sprung Tubular Latch – purchase separately.



- Mark and chisel door edge for latch faceplate. Chisel the recess to a depth that allows the latch faceplate to sit flush with the door edge. Use latch faceplate as a template.
- Insert latch and fasten with wood screws provided.

## Step 3.

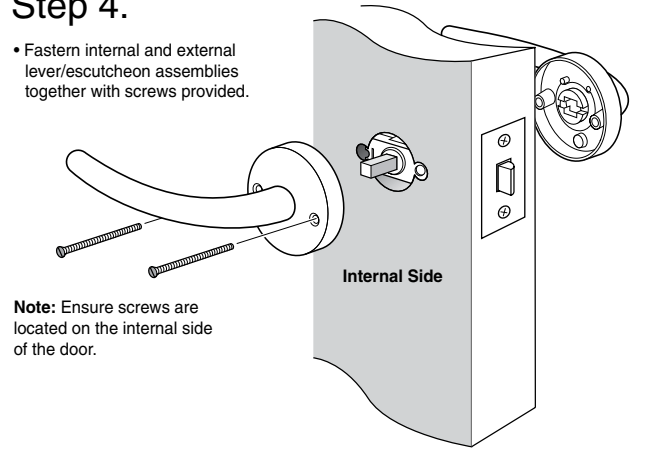
- Insert square drive through latch in door.



**Note:** Standard square drive suits 35mm-45mm door thicknesses. For thicker doors, a special order spindle may be used.

## Step 4.

- Fasten internal and external lever/escutcheon assemblies together with screws provided.



**Note:** Ensure screws are located on the internal side of the door.

**NOTE:** Carefully follow these instructions when installing. Screws to be tightened to a recommended 2.5Nm torque.



FOLD HERE

Mark centre-line of latch hole

Mark centre-line of latch hole

Fit here on door edge

Fit here on door edge

10mm (3/8") hole (drill first)  
35mm (1 3/8") hole (drill second)

BACKSET 60mm (2 3/8")

BACKSET 70mm (2 3/4")

10mm (3/8") hole (drill first)

**Gainsborough**<sup>®</sup>  
fine quality door hardware

Gainsborough Hardware Industries Limited,  
Melbourne, Australia. A.B.N. 25 004 792 269  
[www.gainsboroughhardware.com.au](http://www.gainsboroughhardware.com.au)

AT 013  
APR '10

Installation template for passage applications



# Installation Instructions for 9000 Series Handle Sets

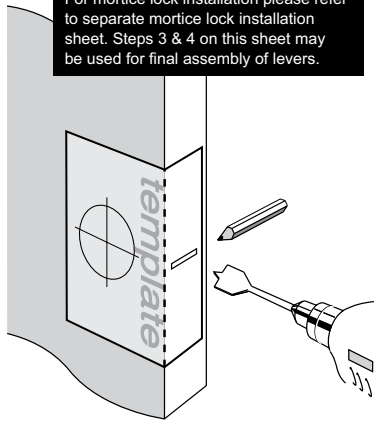
for doors with pre-bored 50mm or 54mm diameter hole through door face.

## Step 1.

- Fold template where indicated.
- Position template on door edge at desired latch height.
- Firmly hold template and mark latch height on door edge and hole centre on door face at required backset (refer template).
- Measure door thickness and mark centre.
- Drill 25mm (1") latch hole through door edge.
- At required backset drill pilot hole – suggested size 3mm (1/8"). Then enlarge hole to 50mm (2") or 54mm (2 1/8") in diameter as required, drilling from both sides of the door.

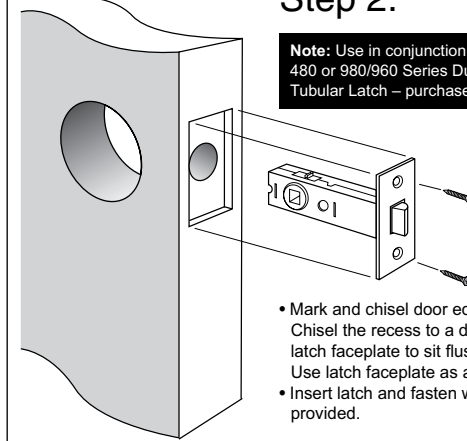
### Important Note

For mortice lock installation please refer to separate mortice lock installation sheet. Steps 3 & 4 on this sheet may be used for final assembly of levers.



## Step 2.

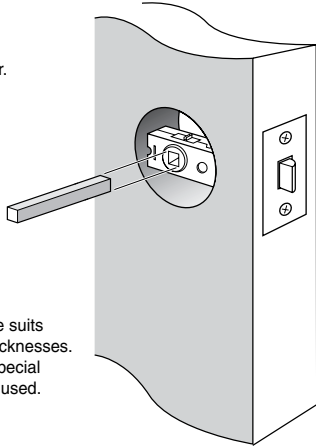
**Note:** Use in conjunction with Gainsborough 480 or 980/960 Series Dual Sprung Tubular Latch – purchase separately.



- Mark and chisel door edge for latch faceplate. Chisel the recess to a depth that allows the latch faceplate to sit flush with the door edge. Use latch faceplate as a template.
- Insert latch and fasten with wood screws provided.

## Step 3.

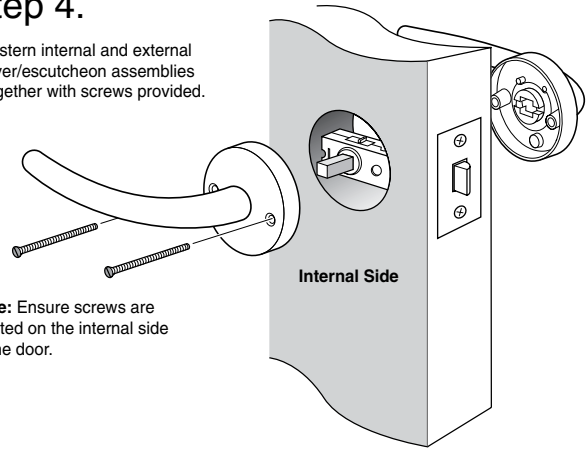
- Insert square drive through latch in door.



**Note:** Standard square drive suits 35mm-45mm door thicknesses. For thicker doors, a special order spindle may be used.

## Step 4.

- Fasten internal and external lever/escutcheon assemblies together with screws provided.



**Note:** Ensure screws are located on the internal side of the door.

**NOTE:** Carefully follow these instructions when installing. Screws to be tightened to a recommended 2.5Nm torque.



FOLD HERE

Mark centre-line of latch hole

Mark centre-line of latch hole

Fit here on door edge

Fit here on door edge

54mm (2 1/8") hole

50mm (2") hole

BACKSET 60mm (2 3/8")

BACKSET 70mm (2 3/4")

**Gainsborough**<sup>®</sup>  
fine quality door hardware

Gainsborough Hardware Industries Limited,  
Melbourne, Australia. A.B.N. 25 004 792 269  
[www.gainsboroughhardware.com.au](http://www.gainsboroughhardware.com.au)

AT 013  
APR '10

Installation template for doors with pre-bored holes or where installation of a privacy adaptor\* is required

\*Check with Gainsborough as to whether this product will suit a privacy adaptor as some products in the range are not suitable.

