

Installation Instructions for 900 Series Leverset

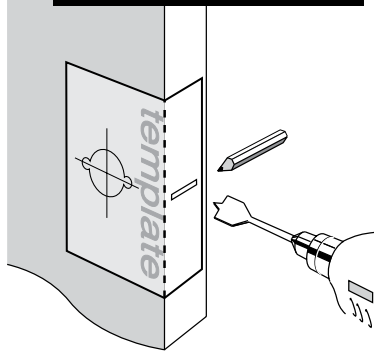
for passage applications for new doors

Step 1.

- Fold template where indicated.
 - Position template on door edge at desired latch height.
 - Firmly hold template and mark latch height on door edge and centre points of handle fixing holes on door face at required backset (refer template).
 - Measure door thickness and mark centre.
 - Drill 25mm (1") latch hole through door edge.
- Note:** it is important to drill this hole squarely.
- Drill two 10mm (3/8") holes and one 35mm (1 3/8") hole through door face at required backset.
- Ensure 10mm holes are drilled first.**

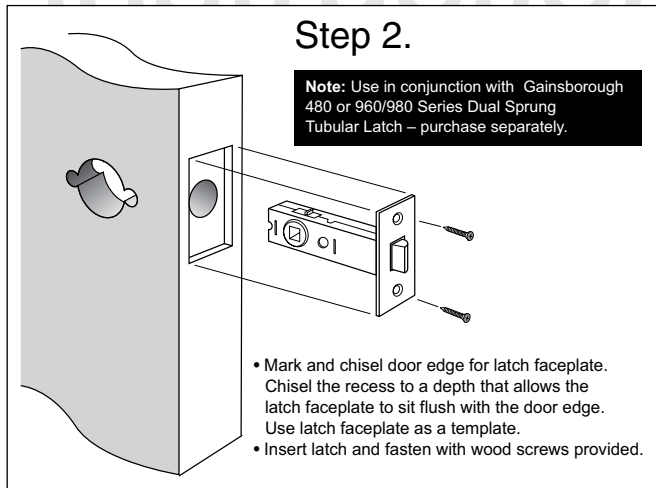
Important Note

For mortice lock installation please refer to separate mortice lock installation sheet. Steps 3 & 4 on this sheet may be used for final assembly of levers.



Step 2.

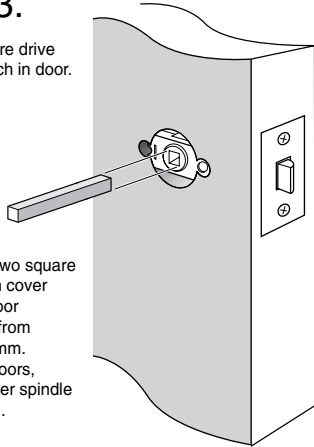
Note: Use in conjunction with Gainsborough 480 or 960/980 Series Dual Sprung Tubular Latch – purchase separately.



- Mark and chisel door edge for latch faceplate. Chisel the recess to a depth that allows the latch faceplate to sit flush with the door edge. Use latch faceplate as a template.
- Insert latch and fasten with wood screws provided.

Step 3.

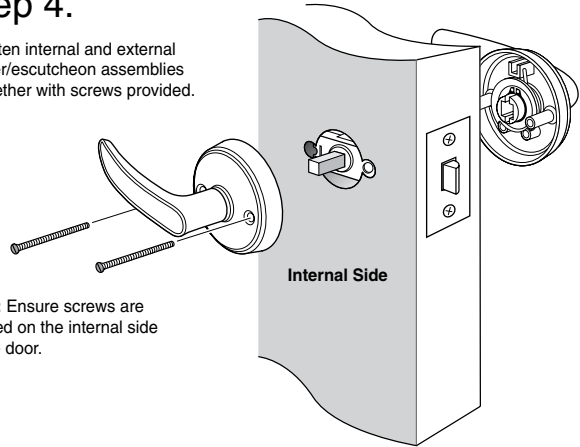
- Insert square drive through latch in door.



Note: Select from two square drives, which cover a range of door thicknesses from 32mm to 45mm. For thicker doors, a special order spindle may be used.

Step 4.

- Fasten internal and external lever/escutcheon assemblies together with screws provided.



Note: Ensure screws are located on the internal side of the door.

NOTE: Carefully follow these instructions when installing. Screws to be tightened to a recommended 2.5Nm torque.



FOLD HERE

Mark centre-line of latch hole

Mark centre-line of latch hole

Fit here on door edge

Fit here on door edge

10mm (3/8") hole (drill first)

35mm (1 3/8")** hole (drill second)

BACKSET 60mm (2 3/8")

BACKSET 70mm (2 3/4")

10mm (3/8") hole (drill first)

**If using leverset with a '9009' Privacy Adaptor, it is recommended to drill a 54mm cross bore hole. The privacy adaptor will fit a 50mm cross bore hole, providing the hole has been drilled to the correct diameter and at the precise backset from door edge (see reverse side).

Gainsborough
ENTER WITH STYLE™

Gainsborough Hardware Industries Limited,
Melbourne, Australia. A.B.N. 25 004 792 269
www.gainsboroughhardware.com.au

Installation template
for passage applications



Installation Instructions for 900 Series Leverset

for doors with pre-drilled holes or where installation of privacy adaptor is required

Step 1.

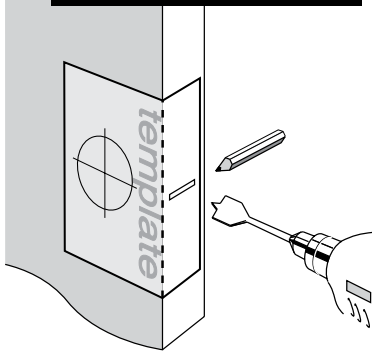
- Fold template where indicated.
- Position template on door edge at desired latch height.
- Firmly hold template and mark latch height on door edge and centre hole on door face at required backset (refer template).
- Measure door thickness and mark centre.
- Drill 25mm (1") latch hole through door edge.

Note: it is important to drill this hole squarely.

- At required backset drill pilot hole (suggested size 3mm (1/8")). Then enlarge hole to 50mm (2") or 54mm (2 1/8") in diameter as required, drilling from both sides of the door.

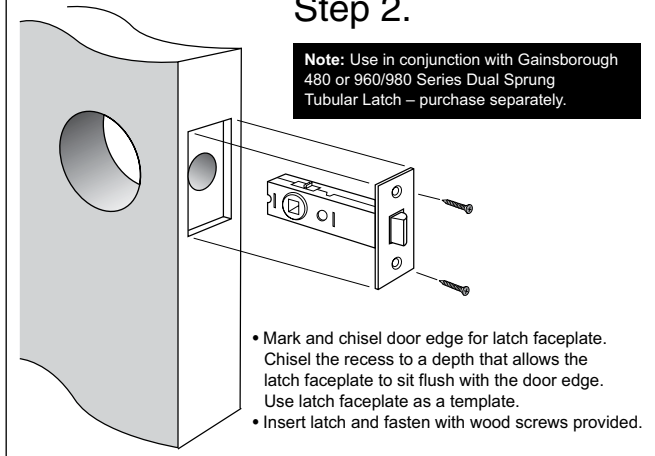
Important Note

For mortice lock installation please refer to separate mortice lock installation sheet. Steps 3 & 4 on this sheet may be used for final assembly of levers.



Step 2.

Note: Use in conjunction with Gainsborough 480 or 960/980 Series Dual Sprung Tubular Latch – purchase separately.

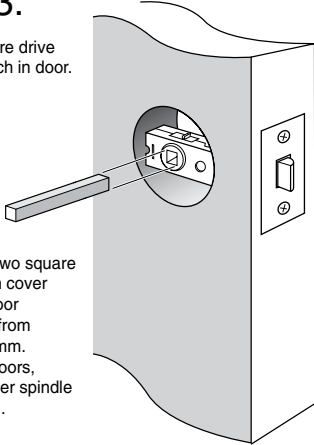


- Mark and chisel door edge for latch faceplate. Chisel the recess to a depth that allows the latch faceplate to sit flush with the door edge. Use latch faceplate as a template.
- Insert latch and fasten with wood screws provided.

Step 3.

- Insert square drive through latch in door.

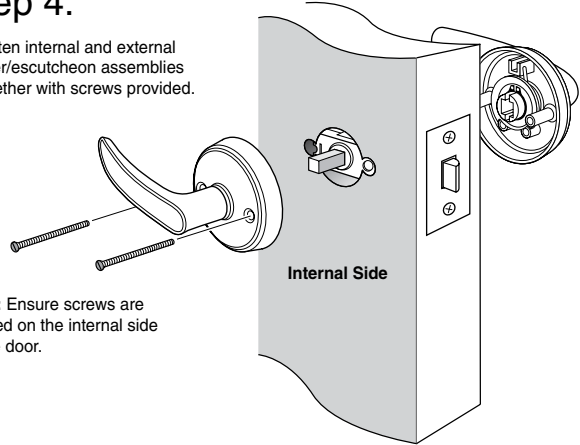
Note: Select from two square drives, which cover a range of door thicknesses from 32mm to 45mm. For thicker doors, a special order spindle may be used.



Step 4.

- Fasten internal and external lever/escutcheon assemblies together with screws provided.

Note: Ensure screws are located on the internal side of the door.



NOTE: Carefully follow these instructions when installing. Screws to be tightened to a recommended 2.5Nm torque.



FOLD HERE

Mark centre-line of latch hole

Mark centre-line of latch hole

Fit here on door edge

Fit here on door edge

54mm (2 1/8") hole

50mm (2") hole

BACKSET 60mm (2 3/8")

BACKSET 70mm (2 3/4")

****If using leverset with a '9009' Privacy Adaptor, it is recommended to drill a 54mm cross bore hole. The privacy adaptor will fit a 50mm cross bore hole, providing the hole has been drilled to the correct diameter and at the precise backset from door edge (see reverse side).**

Gainsborough
ENTER WITH STYLE™

Gainsborough Hardware Industries Limited,
Melbourne, Australia. A.B.N. 25 004 792 269
www.gainsboroughhardware.com.au

PAIT 056

Installation template for doors with pre-bored holes or where installation of a privacy adaptor is required



ORIGINATOR CRM GSH 853 0311