

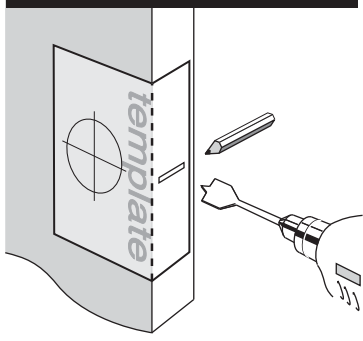
Installation Instructions for 8514 & 8515 Eurostyle Deadbolt

(for doors 35mm - 45mm thick)

Step 1.

- Check that the backset of the lock is set to the desired position.
- Fold template where indicated.
- Position template on door edge at desired latch height.
- Firmly hold template and mark latch height and 41mm (1 - 9/16") lock body hole centre.
- Measure door thickness and mark centre.
- Drill 25.4mm (1") latch hole through door edge.
- **Note:** it is important to drill this hole squarely.
- At required backset drill pilot hole (suggested size 3mm (1/8")).

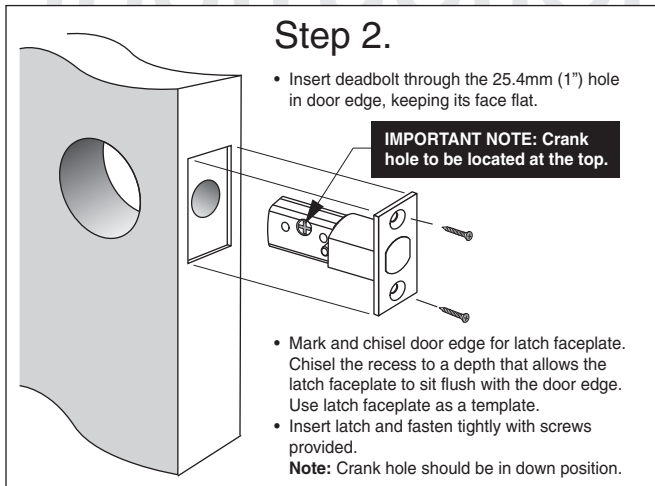
Note: The deadbolt has an adjustable backset length of 60mm or 70mm. It comes preset at 60mm, and can be adjusted to 70mm if required. To adjust the length/backset refer to the "Adjusting the deadbolt length/backset" section of this instruction sheet.



Step 2.

- Insert deadbolt through the 25.4mm (1") hole in door edge, keeping its face flat.

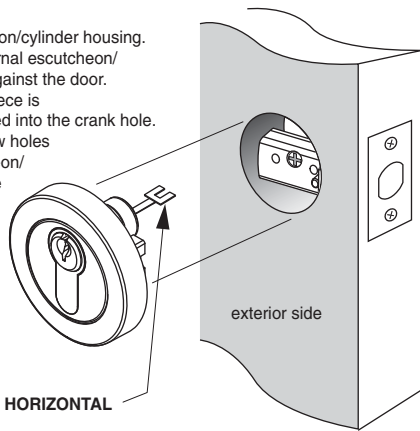
IMPORTANT NOTE: Crank hole to be located at the top.



- Mark and chisel door edge for latch faceplate. Chisel the recess to a depth that allows the latch faceplate to sit flush with the door edge. Use latch faceplate as a template.
- Insert latch and fasten tightly with screws provided.
- **Note:** Crank hole should be in down position.

Step 3.

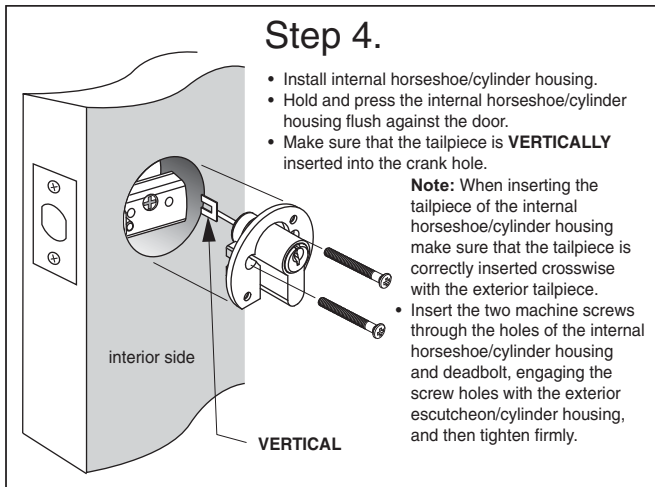
- Install external escutcheon/cylinder housing.
- Hold and press the external escutcheon/cylinder housing flush against the door.
- Make sure that the tailpiece is **HORIZONTALLY** inserted into the crank hole.
- Line up the tapped screw holes on the external escutcheon/cylinder housing with the holes in the deadbolt.
- **Note:** Once completed make sure that the key hole is in the down position.



Step 4.

- Install internal horseshoe/cylinder housing.
- Hold and press the internal horseshoe/cylinder housing flush against the door.
- Make sure that the tailpiece is **VERTICALLY** inserted into the crank hole.

- **Note:** When inserting the tailpiece of the internal horseshoe/cylinder housing make sure that the tailpiece is correctly inserted crosswise with the exterior tailpiece.
- Insert the two machine screws through the holes of the internal horseshoe/cylinder housing and deadbolt, engaging the screw holes with the exterior escutcheon/cylinder housing, and then tighten firmly.



NOTE: Carefully follow these instructions when installing. Screws to be tightened to a recommended 2.5Nm torque.



FOLD HERE

Mark centre-line of latch hole

Mark centre-line of latch hole

Fit here on door edge

41mm (1 9/16") hole

BACKSET 60mm (2 3/8")

BACKSET 70mm (2 3/4")

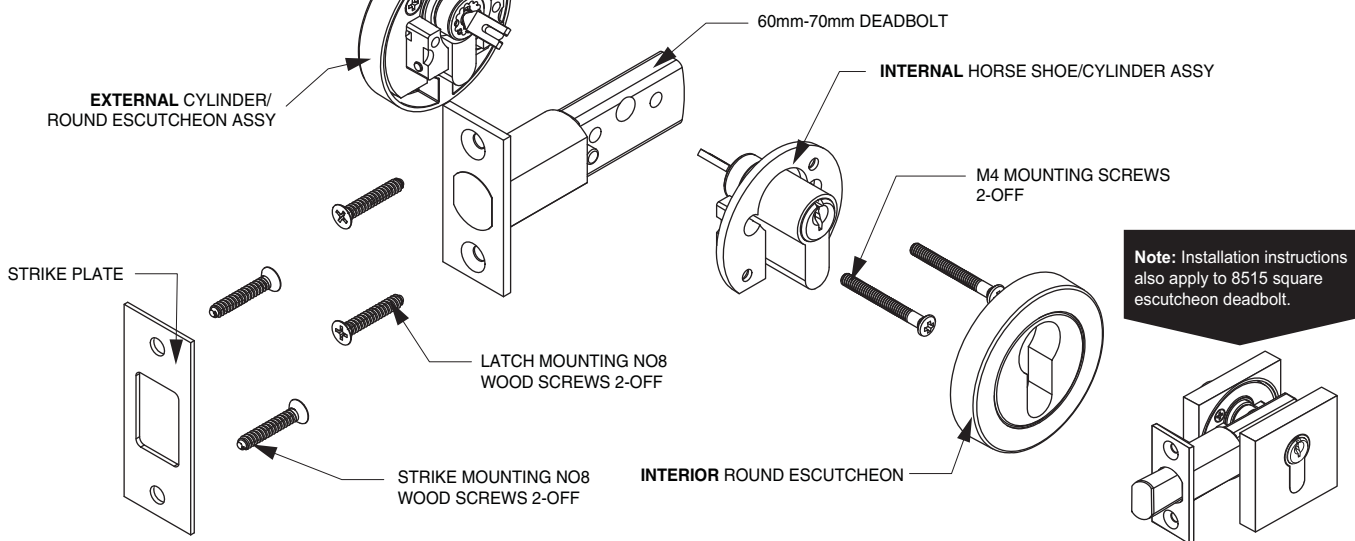
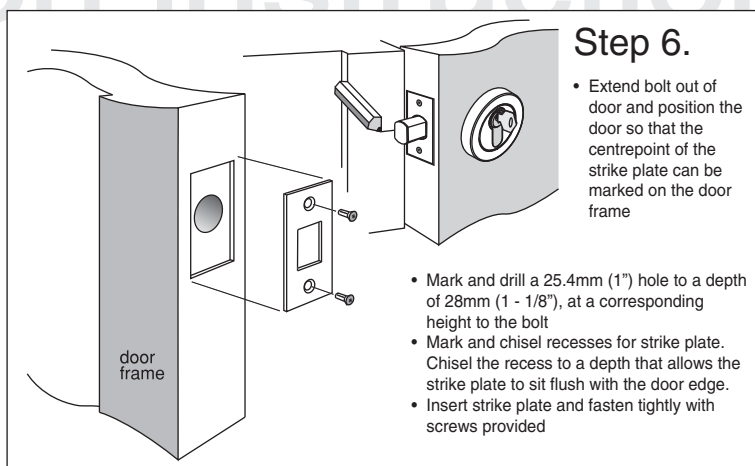
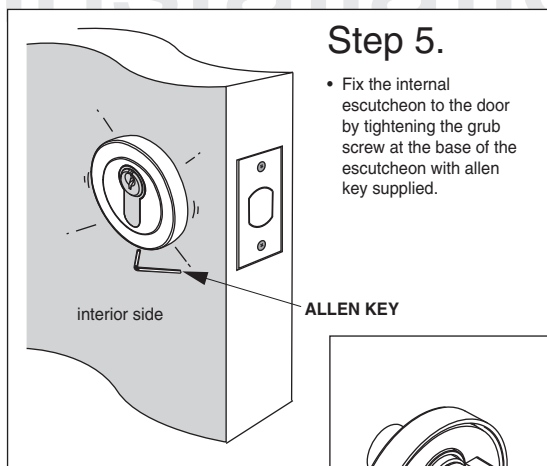
Fit here on door edge



Gainsborough Hardware Industries Limited,
Melbourne, Australia. A.B.N. 25 004 792 269
www.gainsboroughhardware.com.au

Installation Instructions for 8514 & 8515 Eurostyle Deadbolt

(for doors 35mm - 45mm thick)



NOTE: Carefully follow these instructions when installing. Screws to be tightened to a recommended 2.5Nm torque.

Adjust backset from 60mm to 70mm

