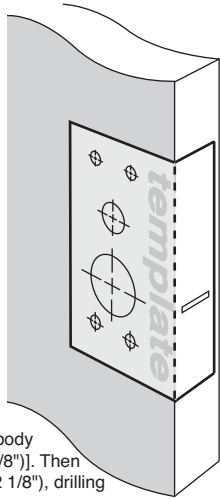


Installation Instructions for Trilock Contemporary – Single Cylinder

These instructions apply to both Lever and Knob versions

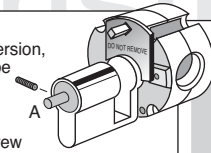
Step 1.

- Fold template where indicated.
- Position template on door edge at desired lock / latch height.
- Firmly hold template and mark latch height and 54mm (2 1/8") lock body hole centre.
- Measure door thickness and mark centre on 'latch height' marking.
- Drill 22mm (7/8") latch hole. NOTE: it is important to drill this hole squarely.
- Drill pilot hole for lock body [suggested size 3mm (1/8")]. Then enlarge hole to 54mm (2 1/8"), drilling from both sides of the door.



Please note:

For this single cylinder Trilock version, the turnbutton stem (A) should be on the internal side of the door. If this is not the case, please re-hand the lock body. To re-hand: remove the grub screw with allen key provided, remove and turn the cylinder to desired direction and re-install. Re-fasten grub screw with allen key.

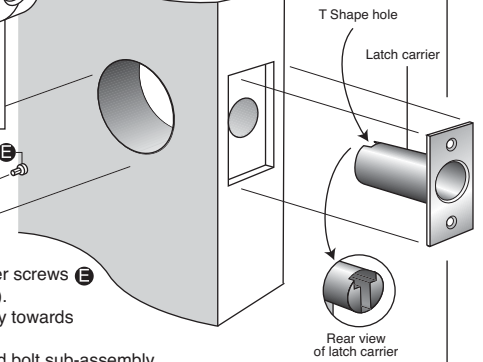


Please note:

Ensure the template position and orientation is as shown, incorrect installation voids warranty.

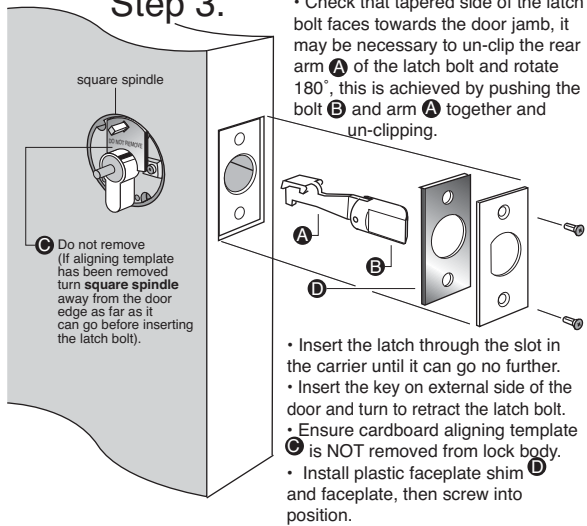
Step 2.

- Remove latch carrier screws (E) (one from either side).
- Insert and rotate key towards latch carrier.
- Pull latch carrier and bolt sub-assembly away from lock body. Mark and chisel latch faceplate to a recess of 3.5mm. Use latch carrier as a template.
- Insert lock body into 54mm (2 1/8") hole.
- Insert latch carrier through 22mm (7/8") hole into lock body assembly and fix with 2 screws. **Ensure T-shaped hole at rear of latch carrier is upright!**



Step 3.

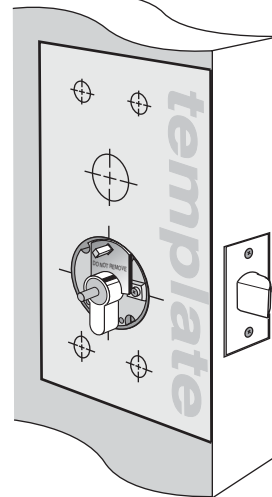
- Check that tapered side of the latch bolt faces towards the door jamb, it may be necessary to un-clip the rear arm (A) of the latch bolt and rotate 180°, this is achieved by pushing the bolt (B) and arm (A) together and un-clipping.



- Insert the latch through the slot in the carrier until it can go no further.
- Insert the key on external side of the door and turn to retract the latch bolt.
- Ensure cardboard aligning template (C) is NOT removed from lock body.
- Install plastic faceplate shim (D) and faceplate, then screw into position.

Step 4.

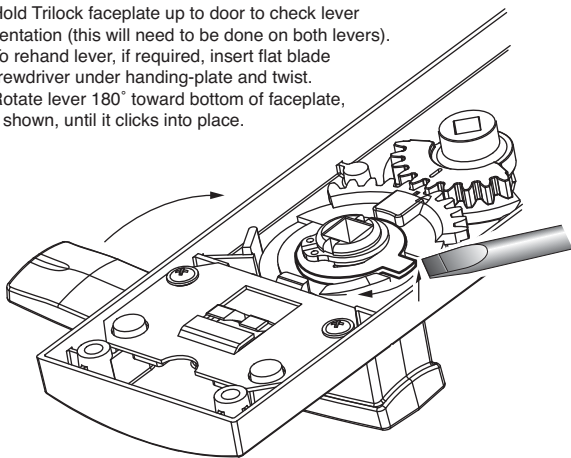
- Remove cut-outs from cardboard template and place over lock body, making sure template is square to door edge.
- While holding template firmly in position, mark remaining 5 holes as indicated on both sides of the door (reversing template as required).
- Drill pilot holes from both sides of the door [suggested size 3mm (1/8")] then enlarge, again from both sides of the door, to sizes indicated on template.
- In particular, ensure the 32mm (1 1/4") dia. hole through door face (located above lock body hole) is drilled only to this size, otherwise correct functioning may be impeded—refer template.



handing information

Step 5.

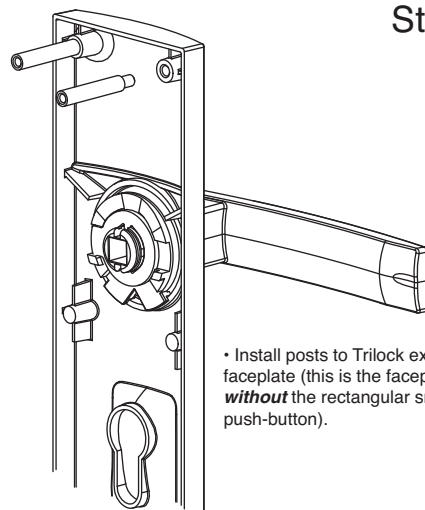
- Hold Trilock faceplate up to door to check lever orientation (this will need to be done on both levers).
- To re-hand lever, if required, insert flat blade screwdriver under handing-plate and twist.
- Rotate lever 180° toward bottom of faceplate, as shown, until it clicks into place.



NOTE: The step is applicable to leverset only.

Step 6.

- Install posts to Trilock external faceplate (this is the faceplate **without** the rectangular snib push-button).



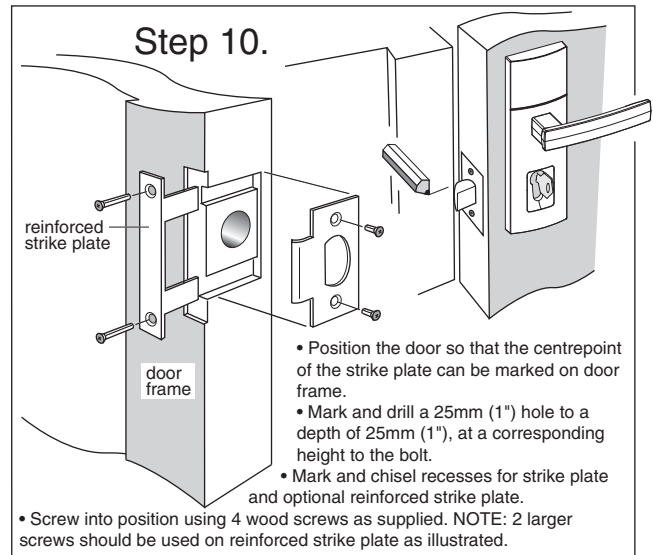
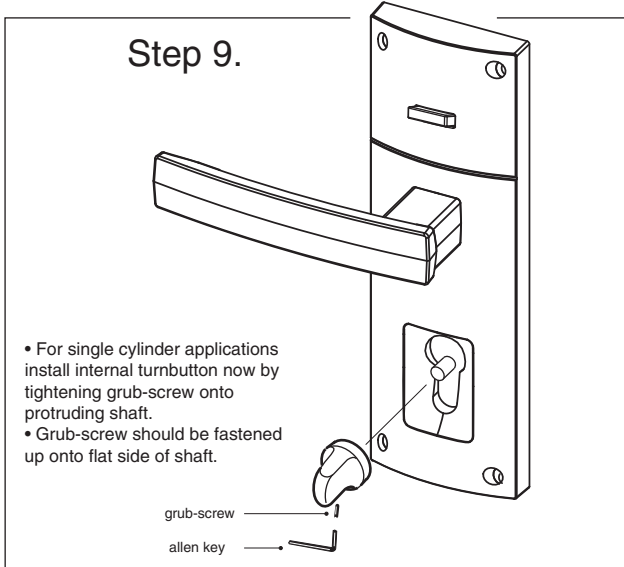
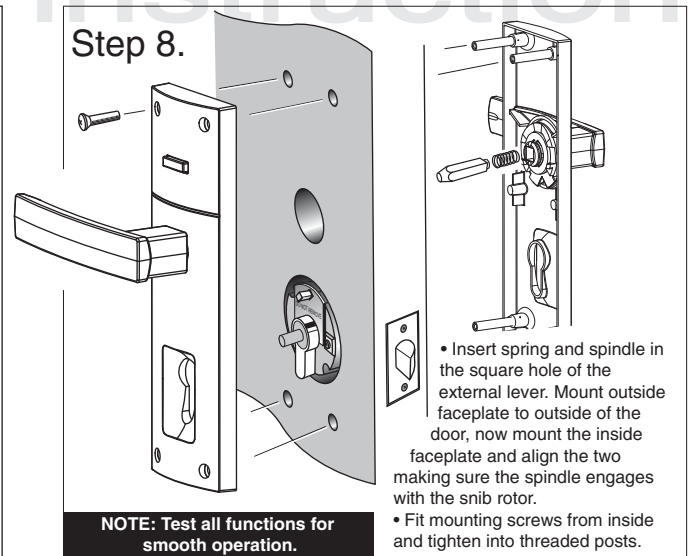
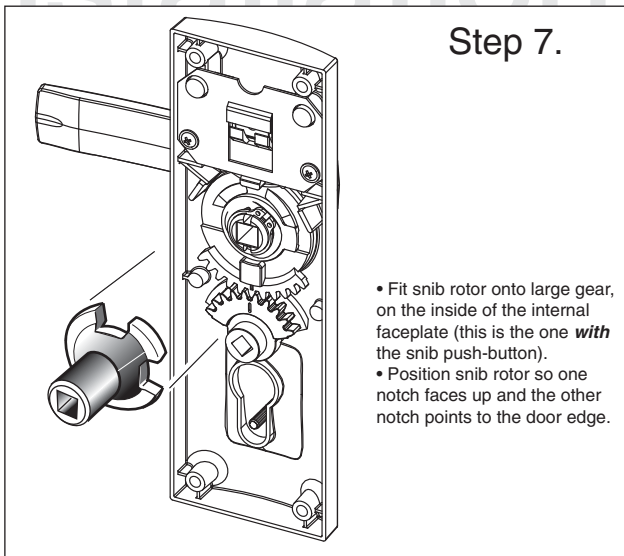
Suits 33mm to 45mm door thicknesses

- NOTE:**
- carefully follow these instructions when installing.
 - do not overtighten screws.
 - use of power driver is not recommended.
 - screws to be tightened to a recommended 2.5Nm torque.
 - fully remove the Trilock prior to painting the door to avoid harming the product's finish.

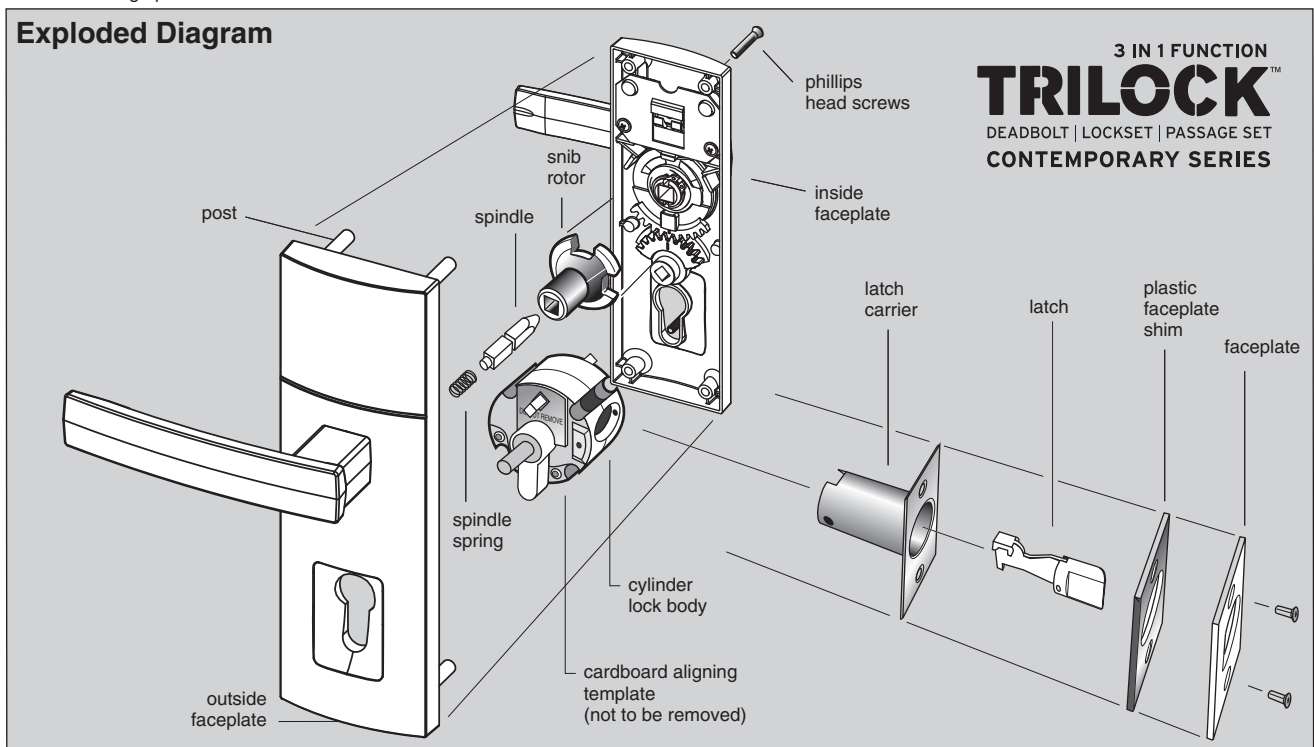
3 IN 1 FUNCTION
TRILOCK™
 DEADBOLT | LOCKSET | PASSAGE SET
 CONTEMPORARY SERIES

Installation Instructions for Trilock Contemporary – Single Cylinder

These instructions apply to both Lever and Knob versions



Australian Patents: App. 662657
Plus other foreign patents



Designed and Assembled in Australia by Gainsborough Hardware Industries Limited,
Melbourne, Australia. A.B.N. 25 004 792 269

www.gainsboroughhardware.com.au